

WISTASTON COTTAGE

£50,000



1. A splayed bay gives access to the garden
2. Timber cladding was steam bent to wrap around the extension's curved form 3. The extension is clad in white oiled Siberian larch 4. Bedroom suite 5. Elevation 6. Plan 7. The scheme extends a semi-detached Gothic revival house



1

SIMON GILL ARCHITECTS

Looking out at Putney Heath and the spire of Holy Trinity Church, Wistaston Cottage is a semi-detached Gothic revival house, which had a leaky, cold 1980s conservatory to its rear.

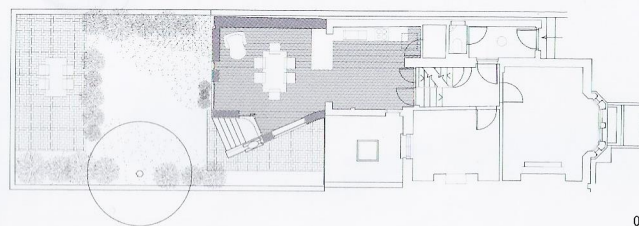
The brief was to replace this with a two-storey extension, housing a kitchen/dining room and a bedroom suite above.

By using lightweight timber construction, it was possible to build the scheme on the conservatory's existing concrete plinth, so reducing cost. A splayed bay giving access to the garden is supported off a single post while doors and windows feature projecting reveals.

Planning requirements insisted the timber cladding be hung horizontally so this was steam bent on site to wrap around the extension's curved form.

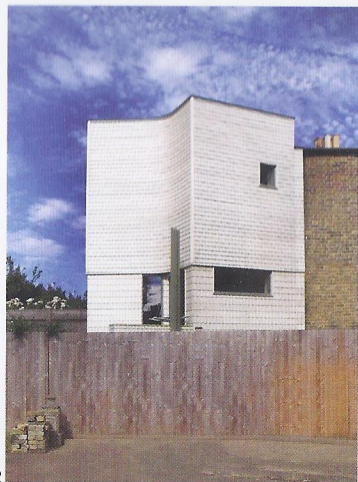
Location London **Completed** October 2014 **Floor area** 55m²
Client Mr B Perl

Plan



0 1m

6



2



3



4

Elevation



5



7