

WIN!
£7,000 WORTH OF PRIZES
FROM THE CONRAN SHOP

Britain's
BESTSELLING
MODERN
HOMES
magazine

LIVINGetc

THE HOMES MAGAZINE FOR MODERN LIVING

OCTOBER 2009 £3.60

US \$8.99/AUS \$9.50/NZ \$9.95

livingetc.com

THE NEW CHIC

*40 pages of homes filled
with ideas and inspiration*

STYLE YOUR HOME WITH...

- Confident colour
- Pretty pattern
- The vintage mix

25

NEW BATHROOM DESIGN SOLUTIONS

From space
planning to those
finishing touches

Edited choice

Flatscreen TVs

Mattresses

Day beds

Mosaic tiles

Make your space special

HOW TO ADD INDIVIDUALITY TO YOUR HOME





OUTSIDE

The whole indoor/outdoor mood was central to Jodie and Scott's vision. Using similar coloured flooring outside and in helps to blur the boundary, while the bank of glass creates a beautifully light space.

GET THE LOOK The Sanmarco table and bench by Zanotta at Nest is like this garden furniture. The Chelsea Gardener sells glazed outdoor pots. Source limestone paving at London Stone Paving.

Home profile

OWNERS Australian Jodie and American Scott – travellers who fell for London and decided to stay – and their children, Matilda, four, and Harry, nine months.

PROPERTY A Victorian semi in Shepherd's Bush, west London, with a contemporary glass extension at the rear. The ground floor has a living room and kitchen-diner, cloakroom and walk-in larder. Upstairs, there are four bedrooms, three bathrooms, a study and a laundry room.

Blue-sky THINKING

What's the definition of a light, bright home? Having to wear your sunglasses at breakfast. With this sunny extension, it's safe to say Jodie and Scott have achieved their aim of bringing the outside in

WORDS JO FROUDE | PHOTOGRAPHY MIKE DAINES | STYLING MARY WEAVER



KITCHEN-DINER

Jodie has minimised the impact of the kitchen by choosing units that disappear into the white walls. She's given the dining area more personality by mixing in older pieces – antique dining chairs and an Art-Deco-style light. The cutaway sections above, meanwhile, not only pull light into those areas, they emphasise the height of the room, and the feeling of space.

GET THE LOOK The kitchen is by Comma Design, with appliances from Miele. The Jodie bar stools are by Ligne Roset at Harrods. The pendant light is from Jenny Lyn. The mauve vase and white tureen are both from Wild At Heart.



LIVING ROOM

Jodie and Scott have gone for timeless grey furniture, then added colour with accessories, making it easier to update the look. The ottoman works as a coffee table or additional seating and is the perfect height for kids to perch on.

GET THE LOOK The Charles sofa and ottoman are by Antonio Citterio at B&B Italia. The side table is by Brissi, and the Anglepoise lamp is from SCP. The Joseph armchair and Amalienborg Rouge rug are from Designers Guild. The cushions and the vase used as magazine storage are from Wild At Heart. Shutterly Fabulous made the shutters. The print is by Bridget Riley. Flooring throughout is by The Natural Wood Flooring Company.

LIVING ROOM

The couple have been clever with storage in here. Hi-fi equipment is hidden in alcove cupboards with book shelves above. The armoire, from a French flea market, was meant for Matilda's room, but it wouldn't go up the stairs. So it's used as a toy cupboard, but Jodie has covered the glass with opaque film to hide the clutter.

GET THE LOOK The Polaris gas fire at B&Q is like this. Source an armoire from thefrenchhouse.co.uk. The Multi-Facet mirror is from Graham & Green. The jug is by Astier de Vilatte, and the frames are from Paperchase.

If you're building an extension, you may as well go for it big time and create one that's all-singing, all-dancing. That was Jodie Neve and her husband Scott's thinking anyway. 'With all the upheaval of a major renovation, there didn't seem any point in adding just an extra few feet to the house,' says Jodie. She's from Australia and Scott's American, so wide open spaces are in their genes. And now, with this spectacular two-tier structure, the couple have hugely increased the size of the house and created a light-filled kitchen-diner that links seamlessly to the garden. 'It satisfies our desire for bringing the outside in,' says Jodie, while Scott quips, 'The kitchen now gets so much sun first thing in the morning, we quite often have breakfast with our sunglasses on.'

The couple met at a party in London nine years ago when Jodie, who works in communications, was on a three-month trip and Scott, who's in IT, was over here on business. And they've never quite made it back. 'London is home now – it's where we got together and all our friends are here. And we feel that even more so now we've finished the extension,' says Jodie. They bought the tired west-London property two years ago and, despite never having done a renovation before, enjoyed the process. 'There are always horror stories about building projects,' says Scott, 'but in fact it brought us closer together.' What the couple lacked in experience, they made up for in enthusiasm. 'I had folders full of ideas I'd cut from magazines and I couldn't wait to use them,' says Jodie.

As well as the extension, the whole place was gutted, with the outside walls and the staircase the only things that were spared the sledgehammer. 'We wanted a big space on the ground floor, with practical features to make family life easy, including a walk-in pantry and loads of hidden storage,' says Jodie. Upstairs, a laundry room sits conveniently between the study and the master bedroom. Both she and Scott were very hands-on during the work. 'I concentrated on the design and interior while Scott

What they did

- Removed internal walls to open up the ground floor.
- Reconfigured rooms upstairs to create a dressing room, en suite and laundry room.
- Installed underfloor heating and replaced flooring throughout.
- Rewired and replumbed the entire house.
- Installed new bathrooms and a kitchen.
- Designed and built a double-height glass extension.
- Redesigned and planted the garden.
- Decorated throughout.

And when the project overran, Jodie took it in her stride. 'The glass extension was just a wall of board when we moved in,' she recalls. 'Even after Harry was born, I'd often wake up to find four or five electricians waiting to get into our bedroom.'

Scott and Jodie's house reflects their way of life, and not just in its light-loving outlook. The place has the mark of a globetrotting family, with pieces picked up on work trips or holidays to Australia, the US and France. 'We drag a lot of stuff back with us,' she says, 'most of which Scott has to carry.' And while this is meant to be home for years to come, it doesn't stop Jodie from keeping an eye out for clever ideas to add to her inspiration folder. 'Scott's always saying to me, "We have a house now – you can stop collecting ideas," but I can't help it.' See more examples of architect Simon Gill's work at simongillarchitects.co.uk. >

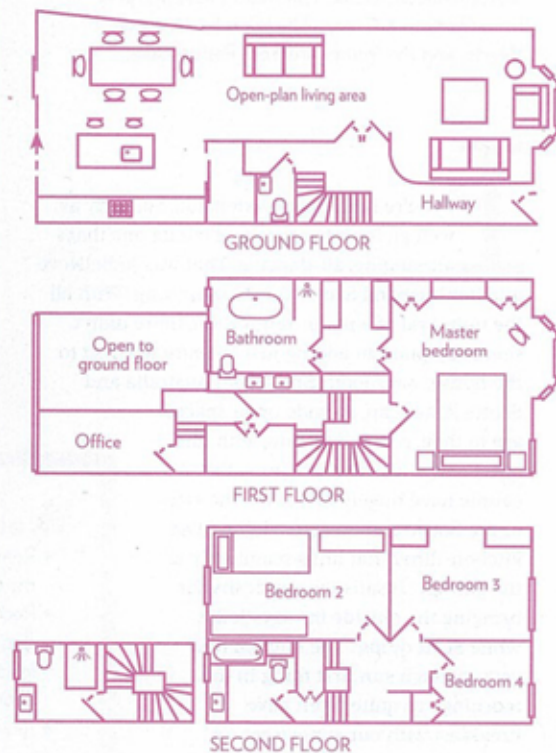


focused on the technology. 'We must have been nightmare clients, but we're still friends with the architect and the builder,' says Jodie.

Inevitably, not everything went according to plan or schedule. When contractors mistakenly ripped up and disposed of the original upstairs floorboards, the couple saw it as a chance to install underfloor heating.



FLOOR PLANS



EN-SUITE BATHROOM

Jodie and Scott reconfigured a fifth bedroom to create a walk-in wardrobe and en-suite bathroom. 'We've been lucky enough to visit some amazing hotels on business trips and I've pinched lots of ideas,' Jodie says. The mirrors over the wash basins are both hinged at the side and open to reveal storage. 'It took a few goes to get it right, but it was worth it to hide clutter from sight.'

GET THE LOOK The bath is by BC Designs at Edwins. The taps are from Dornbracht; the shower head is Hansgrohe. The mirrors are from Brissi, and Marble City sells marble vanity tops.



MASTER BEDROOM

Jodie enjoys finding junk-shop pieces and restoring them. The Louis-style chair cost around £20 and was the first of her projects. 'Scott refers to things as "the promise of a table" or "the promise of a day bed" until they're in a fit state to be used,' says Jodie. 'The carousel horse was bought from a French flea market and sat in our garage for years before we had somewhere to put it.' They struggled to find the perfect chandelier. This one was the right shape, but had brass fittings, so they had it nickel plated.

GET THE LOOK The mirror over the fireplace is from The Old French Mirror Company. The chandelier came from Ollie's Antiques. Dunelm Mill sells striped cushions. Source a wooden horse at Legends Rocking-Horses. The bed is Vi-Spring. The bed throw is from Designers Guild. >

MATILDA'S ROOM

The key in children's rooms is accessible storage. Here, Jodie designed a bench, then added storage boxes on castors so Matilda has easy access to her toys. The mirror used to be in the hall of their old house. 'Matilda stands in front of it for hours pretending to be a ballerina,' she laughs. She's hung pastel-coloured paper shades at different heights to create a fairy-tale feel.

GET THE LOOK See page 122 for where to buy paper shades. The Angelina chandelier at Next Home is like this. Great Little Trading Company stocks butterflies; notonthehighstreet.com sells letters. Sweetpea & Willow sells beds like Matilda's. The tailor's dummy is from Alfies Antique Market. The cushions are from Designers Guild.

CHILDREN'S BATHROOM

The second bathroom was designed to be adaptable to the children's changing needs. 'We went for white with a few hits of colour, like the bath mats,' says Jodie, 'stuff that's easy and inexpensive to change when they want something different.'

GET THE LOOK The Ringam mats are by Ikea. The bright towels are from Habitat and Ikea. The taps are by Dornbracht. Aaronson Noon sells large glass door handles. Buy a Tam Tam stool from Made In Design.

For stockist details, see page 182

Home truths

Describe your typical Saturday morning. Scott: I get up at 6.30am and have a cup of coffee, then spend the next hour making banana pancakes. By the time I've finished, the kitchen is a total mess, but if I don't make them, Matilda yells at me. Then I have a second cup of coffee to relax and read the paper in peace. **What do you miss most about Colorado and Melbourne?** Scott: The skiing. Jodie: The sun and being able to get to the beach in 15 minutes.

Who is your design hero?

Jodie: Belgian architect Pascal Van Der Kelen - his work was a real inspiration for this house.

What music gets you dancing around your living room?

Jodie: These days, it's usually children's music. Matilda dances from the moment she gets up to the moment she falls asleep.

If you could own a house anywhere else in the world, where would it be? Scott: Vail, the ski resort in Colorado. It's like Aspen, but without the celebrities.

Do you collect anything? Jodie: We started collecting work by British print artists, such as Bridget Riley and Terry Frost. We thought they'd be good to take with us when we left England, but we're not going anywhere after all.



ONLINE EXTRA

For more inspiring houses with light, bright extensions, visit livingetc.com/gallery and click on Album: Extensions.



ORDER, ORDER

Take a tip from Jodie and Scott and fit alcoves with built-in storage to showcase books and photos. Domus can build bespoke shelves and fitted cupboards that will help you to achieve a similar look. If you're on a tight budget, you can recreate this yourself with white floating shelves from stores such as Focus or Ikea.



CLOCKWISE FROM LEFT
Deco pendant, £100, The White Company. Bowl, £11.50, Rice at fig1.co.uk. Silhouette sofa, £1,668, Naughtone.

IDEAS TO STEAL

from Jodie and Scott's house



HIDDEN TREASURE

Jodie and Scott have cleverly used chic bathroom mirrors to hide recessed storage.

This creates a minimal, streamlined finish while retaining practicality. To find a tradesperson who can build recessed cupboards, visit myhammer.co.uk. For mirrors in this style, check out Graham & Green's Antiqued Silver beaded design.

CLOCKWISE FROM LEFT
Paper lanterns, from £4.50 each, RE. Parisian Ribbon Lady's chair, £245, The French Bedroom Company. Sanderson Etchings & Roses rug, £318, John Lewis.



For stockist details, see page 182